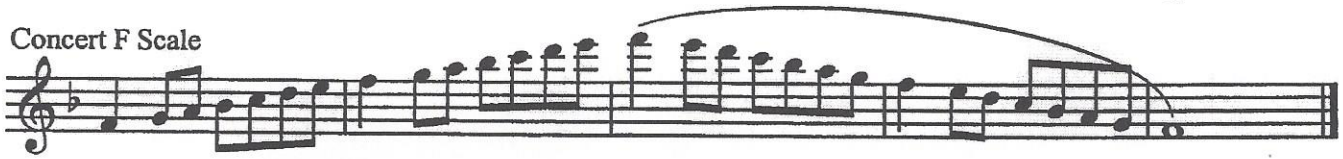


Region 12 ATSSB - Middle School - Flute

Concert C Scale



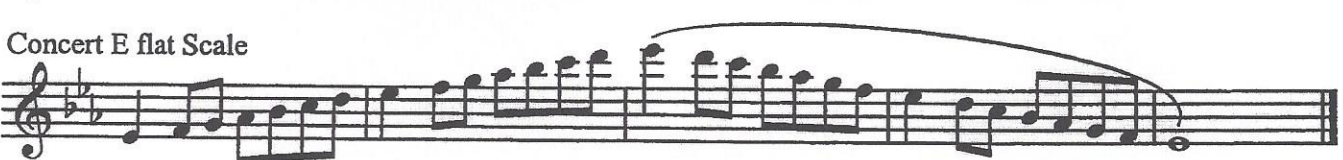
Concert F Scale



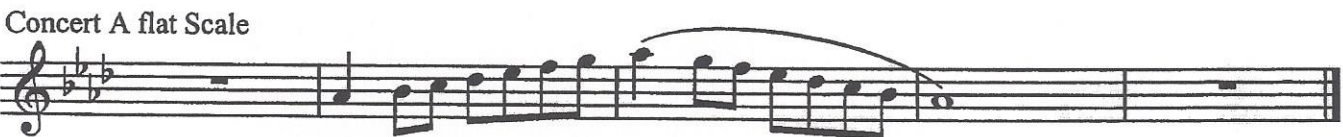
Concert B flat Scale



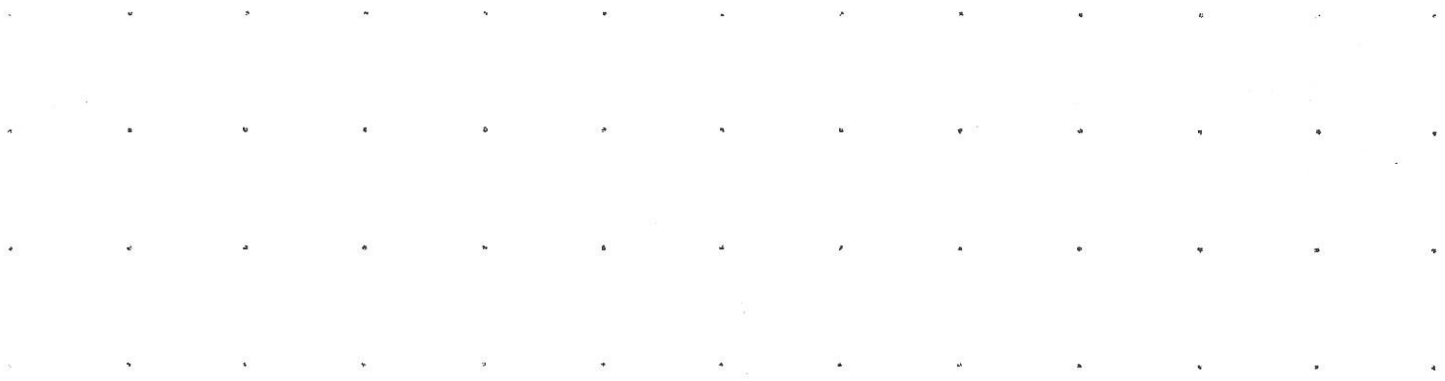
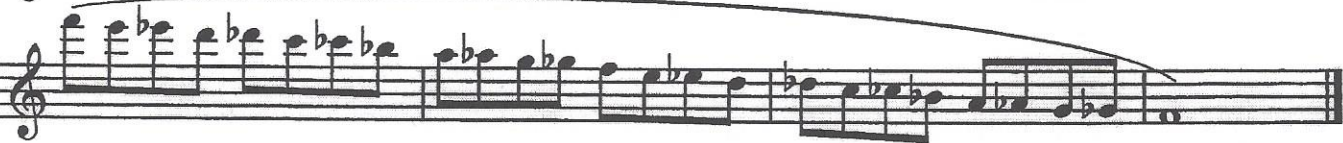
Concert E flat Scale



Concert A flat Scale



Concert F Chromatic Scale



Region 12 ATSSB - Middle School - Oboe

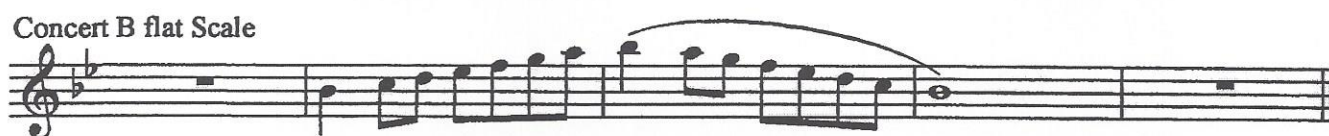
Concert C Scale



Concert F Scale



Concert B flat Scale



Concert E flat Scale



Concert A flat Scale

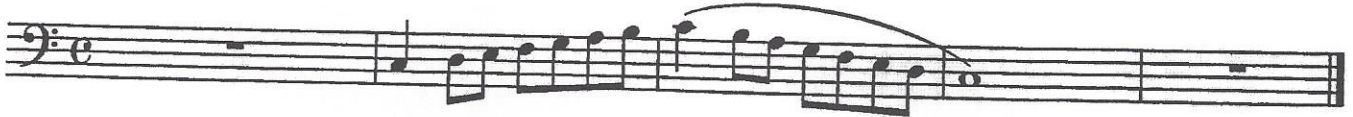


Concert F Chromatic Scale



Region 12 ATSSB - Middle School - Bassoon

Concert C Scale



Concert F Scale



Concert B flat Scale



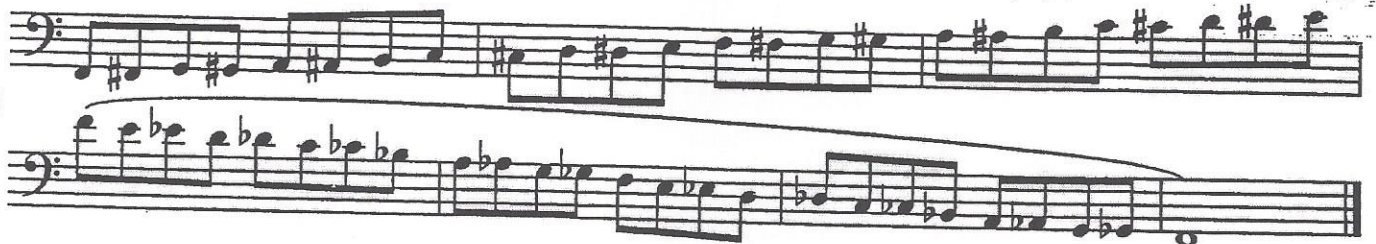
Concert E flat Scale



Concert A flat Scale



Concert F Chromatic Scale



Region 12 ATSSB - Middle School - Bb Clarinet

Concert C (written D) Scale

Musical notation for the Concert C (written D) Scale. The scale is written in treble clef with a key signature of two sharps (D major) and a common time signature. It consists of an ascending eighth-note scale followed by a descending eighth-note scale, with a fermata over the final note.

Concert F (written G) Scale

Musical notation for the Concert F (written G) Scale. The scale is written in treble clef with a key signature of one sharp (G major) and a common time signature. It consists of an ascending eighth-note scale followed by a descending eighth-note scale, with a fermata over the final note.

Concert B flat (written C) Scale

Musical notation for the Concert B flat (written C) Scale. The scale is written in treble clef with a key signature of one flat (C major) and a common time signature. It consists of an ascending eighth-note scale followed by a descending eighth-note scale, with a fermata over the final note.

Concert E flat (written F) Scale

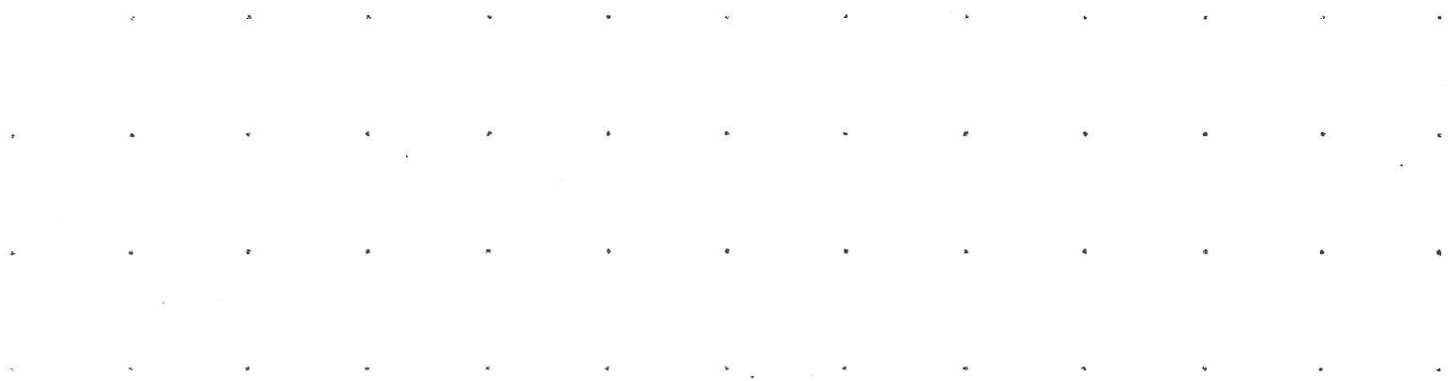
Musical notation for the Concert E flat (written F) Scale. The scale is written in treble clef with a key signature of two flats (F major) and a common time signature. It consists of an ascending eighth-note scale followed by a descending eighth-note scale, with a fermata over the final note.

Concert A flat (written B flat) Scale

Musical notation for the Concert A flat (written B flat) Scale. The scale is written in treble clef with a key signature of three flats (Bb major) and a common time signature. It consists of an ascending eighth-note scale followed by a descending eighth-note scale, with a fermata over the final note.

Concert F (written G) Chromatic Scale

Musical notation for the Concert F (written G) Chromatic Scale. The scale is written in treble clef with a key signature of one sharp (G major) and a common time signature. It consists of two lines of chromatic eighth-note scales: the first line is ascending and the second line is descending, both with a fermata over the final note.



Region 12 ATSSB - Middle School - Bb Bass/Contra Clarinet

Concert C (written D) Scale

Musical notation for the Concert C (written D) Scale. The scale is written in treble clef with a key signature of one sharp (F#) and a common time signature (C). The scale starts on C4 and ends on C5, with a slur over the final two notes.

Concert F (written G) Scale

Musical notation for the Concert F (written G) Scale. The scale is written in treble clef with a key signature of one sharp (F#) and a common time signature (C). The scale starts on F4 and ends on F5, with a slur over the final two notes.

Concert B flat (written C) Scale

Musical notation for the Concert B flat (written C) Scale. The scale is written in treble clef with a key signature of one flat (Bb) and a common time signature (C). The scale starts on Bb4 and ends on Bb5, with a slur over the final two notes.

Concert E flat Scale

Musical notation for the Concert E flat Scale. The scale is written in treble clef with a key signature of two flats (Bb, Eb) and a common time signature (C). The scale starts on Eb4 and ends on Eb5, with a slur over the final two notes.

Concert A flat (written B flat) Scale

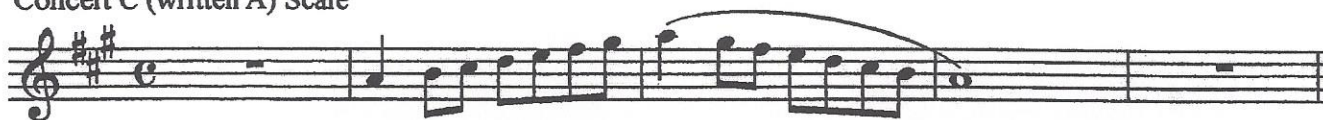
Musical notation for the Concert A flat (written B flat) Scale. The scale is written in treble clef with a key signature of two flats (Bb, Eb) and a common time signature (C). The scale starts on Ab4 and ends on Ab5, with a slur over the final two notes.

Concert F (written G) Chromatic Scale

Musical notation for the Concert F (written G) Chromatic Scale. The scale is written in treble clef with a key signature of one sharp (F#) and a common time signature (C). The scale consists of two lines: the first line is the ascending chromatic scale from F4 to F5, and the second line is the descending chromatic scale from F5 to F4. A slur covers the entire two-line scale.

Region 12 ATSSB - Middle School - Eb Alto/Bari Saxophone

Concert C (written A) Scale



Concert F (written D) Scale



Concert B flat (written G) Scale



Concert E flat (written C) Scale



Concert A flat (written F) Scale



Concert F (written D) Chromatic Scale



Region 12 ATSSB - Middle School - Trumpet/Baritone TC

Concert C (written D) Scale

Musical notation for the Concert C (written D) Scale. The scale is written in treble clef with a key signature of one sharp (F#) and a common time signature (C). The notes are: C4, D4, E4, F#4, G4, A4, B4, C5, B4, A4, G4, F#4, E4, D4, C4. A slur covers the notes from G4 to C5.

Concert F (written G) Scale

Musical notation for the Concert F (written G) Scale. The scale is written in treble clef with a key signature of one sharp (F#) and a common time signature (C). The notes are: F4, G4, A4, B4, C5, B4, A4, G4, F#4, E4, D4, C4, B3, A3, G3, F3. A slur covers the notes from G4 to C5.

Concert B flat (written C) Scale

Musical notation for the Concert B flat (written C) Scale. The scale is written in treble clef with a key signature of one flat (Bb) and a common time signature (C). The notes are: Bb3, C4, D4, E4, F4, G4, A4, Bb4, C5, Bb4, A4, G4, F4, E4, D4, C4. A slur covers the notes from G4 to C5.

Concert E flat (written F) Scale

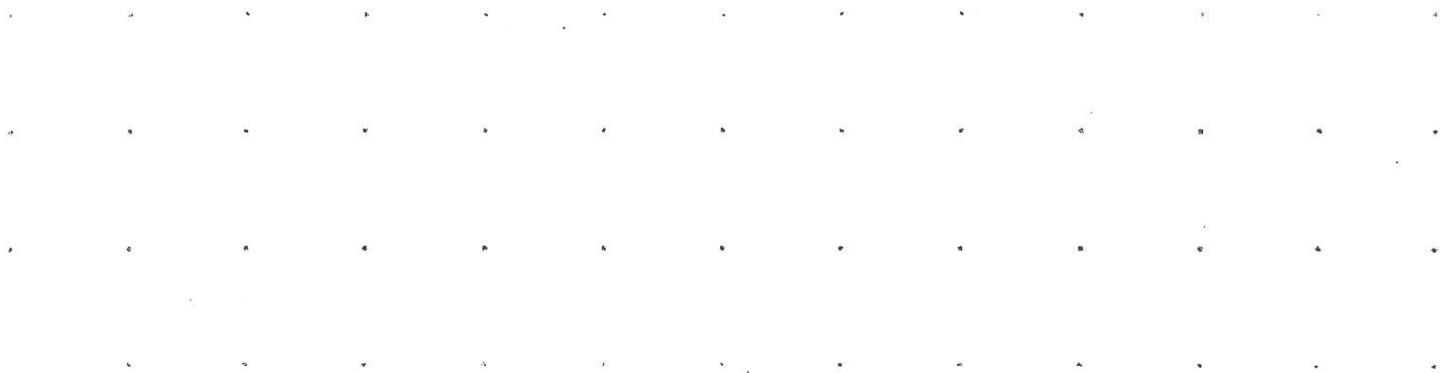
Musical notation for the Concert E flat (written F) Scale. The scale is written in treble clef with a key signature of two flats (Bb, Eb) and a common time signature (C). The notes are: Eb3, F3, G3, A3, Bb3, C4, D4, Eb4, F4, G4, Ab4, Bb4, C5, Bb4, Ab4, G4, F4, Eb4, D4, C4. A slur covers the notes from G4 to C5.

Concert A flat (written B flat) Scale

Musical notation for the Concert A flat (written B flat) Scale. The scale is written in treble clef with a key signature of two flats (Bb, Eb) and a common time signature (C). The notes are: Ab3, Bb3, C4, D4, Eb4, F4, G4, Ab4, Bb4, C5, Bb4, Ab4, G4, F4, Eb4, D4, C4. A slur covers the notes from G4 to C5.

Concert F (written G) Chromatic Scale

Musical notation for the Concert F (written G) Chromatic Scale. The scale is written in treble clef with a key signature of one sharp (F#) and a common time signature (C). The notes are: F4, F#4, G4, G#4, A4, A#4, B4, B#4, C5, B4, A4, G4, F4. A slur covers the notes from G4 to C5.



Region 12 ATSSB - Middle School - Trombone

Concert C Scale

Musical notation for the Concert C Scale in bass clef, 2/4 time. The scale starts on middle C (C4) and ascends to C5, then descends back to C4. The notes are: C4, D4, E4, F4, G4, A4, B4, C5, B4, A4, G4, F4, E4, D4, C4. A slur covers the ascending and descending lines.

Concert F Scale

Musical notation for the Concert F Scale in bass clef, 2/4 time. The scale starts on F3 and ascends to F4, then descends back to F3. The notes are: F3, G3, A3, B3, C4, D4, E4, F4, E4, D4, C4, B3, A3, G3, F3. A slur covers the ascending and descending lines.

Concert B flat Scale

Musical notation for the Concert B flat Scale in bass clef, 2/4 time. The scale starts on Bb3 and ascends to Bb4, then descends back to Bb3. The notes are: Bb3, C4, D4, Eb4, F4, G4, Ab4, Bb4, Ab4, G4, F4, Eb4, D4, C4, Bb3. A slur covers the ascending and descending lines.

Concert E flat Scale

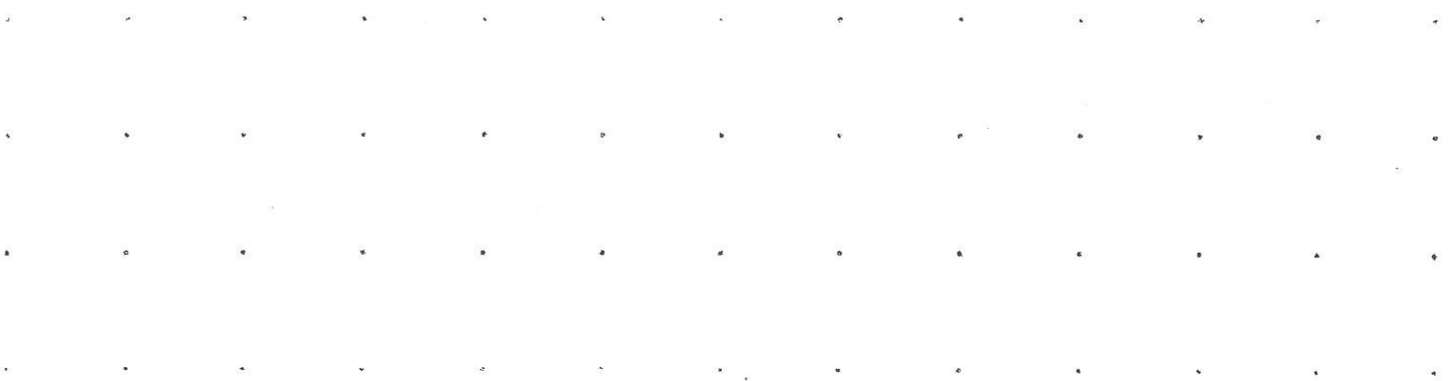
Musical notation for the Concert E flat Scale in bass clef, 2/4 time. The scale starts on Eb3 and ascends to Eb4, then descends back to Eb3. The notes are: Eb3, F3, G3, Ab3, Bb3, C4, D4, Eb4, D4, C4, Bb3, Ab3, G3, F3, Eb3. A slur covers the ascending and descending lines.

Concert A flat Scale

Musical notation for the Concert A flat Scale in bass clef, 2/4 time. The scale starts on Ab3 and ascends to Ab4, then descends back to Ab3. The notes are: Ab3, Bb3, C4, Db4, Eb4, F4, G4, Ab4, G4, F4, Eb4, Db4, C4, Bb3, Ab3. A slur covers the ascending and descending lines.

Concert F Chromatic Scale

Musical notation for the Concert F Chromatic Scale in bass clef, 2/4 time. The scale starts on F3 and ascends chromatically to F4, then descends chromatically back to F3. The notes are: F3, F#3, G3, G#3, A3, A#3, B3, B#3, C4, C#4, D4, D#4, E4, E#4, F4, E4, D4, C4, B3, A3, G3, F3. A slur covers the ascending and descending lines.

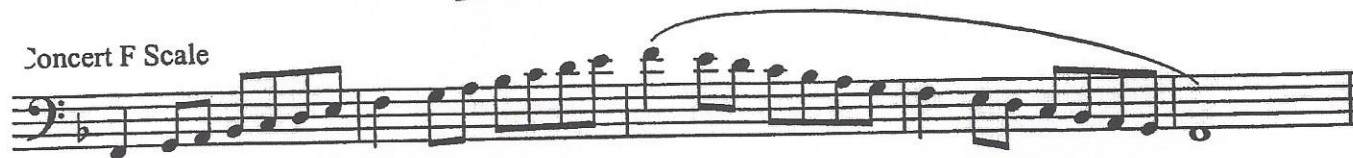


Region 12 ATSSB - Middle School - Baritone BC

Concert C Scale



Concert F Scale



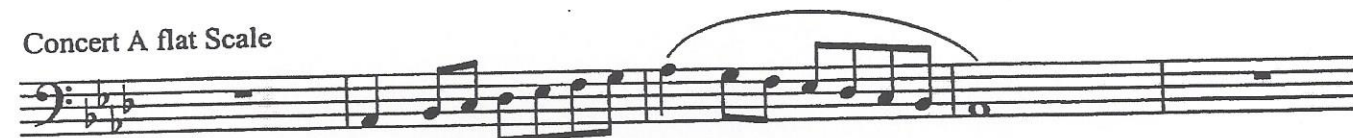
Concert B flat Scale



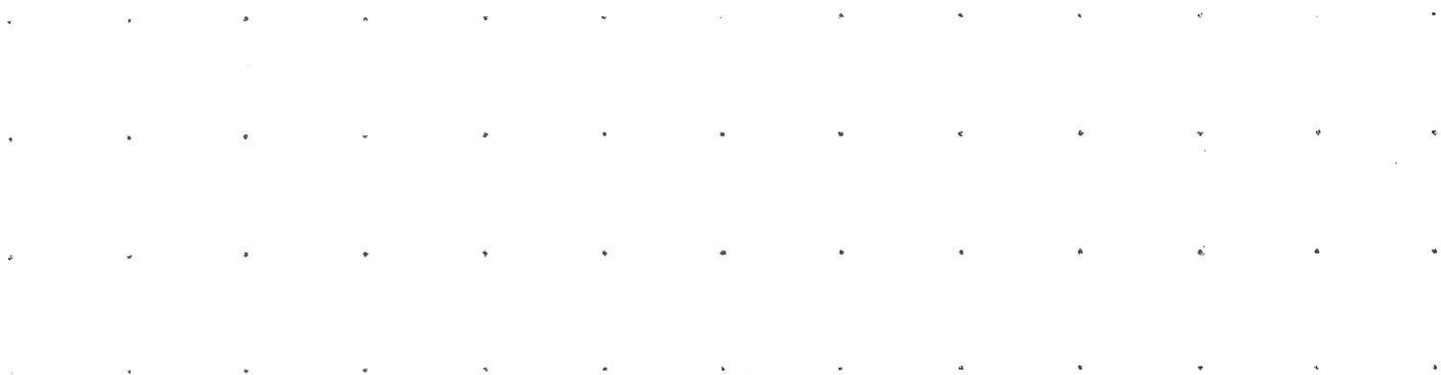
Concert E flat Scale



Concert A flat Scale



Concert F Chromatic Scale



Region 12 ATSSB - Middle School - Tuba

Concert C Scale

Musical notation for the Concert C Scale in bass clef, common time. The scale starts on middle C (C4) and ascends to C5, then descends back to C4. The notes are: C4, D4, E4, F4, G4, A4, B4, C5, B4, A4, G4, F4, E4, D4, C4. A slur covers the notes from G4 to C5.

Concert F Scale

Musical notation for the Concert F Scale in bass clef, common time. The scale starts on F3 and ascends to F4, then descends back to F3. The notes are: F3, G3, A3, B3, C4, D4, E4, F4, E4, D4, C4, B3, A3, G3, F3. A slur covers the notes from C4 to F4.

Concert B flat Scale

Musical notation for the Concert B flat Scale in bass clef, common time. The scale starts on Bb3 and ascends to Bb4, then descends back to Bb3. The notes are: Bb3, C4, D4, Eb4, F4, G4, Ab4, Bb4, Ab4, G4, F4, Eb4, D4, C4, Bb3. A slur covers the notes from F4 to Bb4.

Concert E flat Scale

Musical notation for the Concert E flat Scale in bass clef, common time. The scale starts on Eb3 and ascends to Eb4, then descends back to Eb3. The notes are: Eb3, F3, G3, Ab3, Bb3, C4, D4, Eb4, D4, C4, Bb3, Ab3, G3, F3, Eb3. A slur covers the notes from C4 to Eb4.

Concert A flat Scale

Musical notation for the Concert A flat Scale in bass clef, common time. The scale starts on Ab3 and ascends to Ab4, then descends back to Ab3. The notes are: Ab3, Bb3, C4, Db4, Eb4, F4, G4, Ab4, G4, F4, Eb4, Db4, C4, Bb3, Ab3. A slur covers the notes from F4 to Ab4.

Concert F Chromatic Scale

Musical notation for the Concert F Chromatic Scale in bass clef, common time. The scale consists of two parts: an ascending chromatic scale from F3 to F4, and a descending chromatic scale from F4 to F3. The notes are: F3, F#3, G3, G#3, A3, A#3, B3, B#3, C4, C#4, D4, D#4, E4, F4, E4, D4, C4, B3, A3, G3, F3. A slur covers the notes from C4 to F4.

